



SUPERIOR HANG STRENGTH = MAXIMUM PERFORMANCE

The superior hang strength of TUFF-N-DRI® H8 delivers a consistent thickness for maximum waterproofing performance when it cures to 40 mils. Other waterproofing products slide down the wall and pool at the footer, leaving basement walls vulnerable to leaks and seepage. TUFF-N-DRI is performance-engineered to hang in place on the wall, eliminating product waste and providing exceptional waterproofing protection.

Only TUFF-N-DRI H8:

- holds back up to 8 feet of water under hydrostatic pressure
- is specifically formulated to span concrete settling cracks, sealing against water leaks
- offers up to a 30 year performance warranty
- stays where it's sprayed for maximum protection

TREMCO
/Barrier Solutions



A History of PERFORMANCE

For well over 30 years, Tremco Barrier Solutions has helped builders across North America offer drier, more comfortable homes by manufacturing the industry's best foundation waterproofing system.

Membrane Properties

Resistance to Hydrostatic Head	Results: 8' of water	Method: ASTM D-5385
Type	Polymer-enhanced asphalt liquid-applied membrane	
Color	Black	
Solids	64% ± 3% [percent by weight]	
Density	8.2 ± .15 lbs/gal	
Application	Airless spray	
Application Temperature	Minimum 20°F	
Application Thickness	60 mils (wet) ¹	
Typical Cure Time	16-24 hrs [under normal conditions]	
Crack Bridging Ability	Results: Passes	Method: ICC-ES AC29, Sec 3.1
Water Vapor Permeance	Results: <1 perm for 40-mil dry coating (grains/sf/hr)	Method: ASTM E-96 Wet Method
Elongation	Results: >1800%	Method: ASTM D-412
Adhesion to Concrete	Results: Exceeds	Method: ASTM C-836
Resistance to Degradation in Soil	Results: Good	Method: ASTM E-154
Mold Growth and Bacterial Attack	Results: No degradation	Method: ASTM D-3273, ASTM D-3274

¹ Measured in-place with ASTM D-4414 notch film gauge. Wet 60 mils on notch film gauge. Membrane cures [dries] to 40 mils.

Board Properties²

Type	WARM-N-DRI Foundation Board				TUFF-N-DRI Barrier Board			
	4' x 4'		4' x 8'		4' x 4'		4' x 8'	
Board Thickness	3/4"	1 3/16"	2 3/8"	3 1/2"	3/4"	1 3/16"	2 1/8"	2 3/8"
Drainage Ability [Gals/Hr/Lineal Foot] ³	>70	>110	>210	>290	>50	>80	>130	>160
Thermal Resistance	R-3	R-5	R-10	R-15	R-3 ⁴	R-5 ⁴	R-9 ⁴	R-10 ⁴

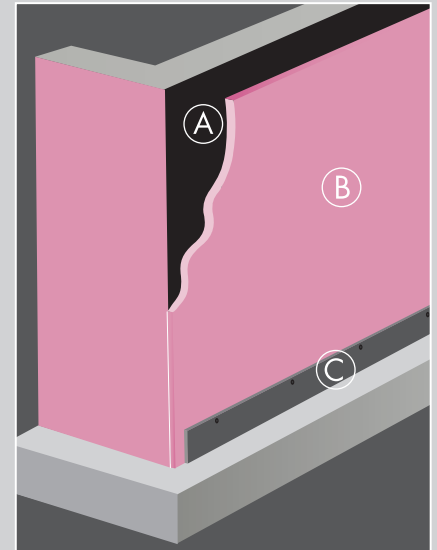
² Meets requirements for ASTM C 612.

³ Hydraulic gradient of 1.0. Drainage rates with 10% board compression. At 65% compression, foundation board has the drainage capabilities of coarse sand.

⁴ As manufactured resistance values (R-value).



*For complete warranty details, visit TUFF-N-DRI.com
 ©2018, Tremco Barrier Solutions, Inc. TUFF-N-DRI® and DrainStar® are registered trademarks of Tremco Barrier Solutions, Inc.
 WARM-N-DRI® is a registered trademark of Owens Corning.



TUFF-N-DRI offers the most reliable system in the industry to control basement moisture:

- (A) TUFF-N-DRI H8 membrane is spray-applied to a consistent thickness of 40 cured mils.
- (B) WARM-N-DRI® Foundation Board or TUFF-N-DRI Barrier Board protects the membrane, assists drainage, and insulates basement walls to reduce interior condensation.
- (C) Shown with optional DrainStar® Strip Drain, a cost-effective alternative to drain tile and gravel.

For more details on TUFF-N-DRI H8, contact your local Barrier Solutions Contractor, call 800-DRY-BSMT or visit TUFF-N-DRI.com

Your Local Barrier Solutions Contractor